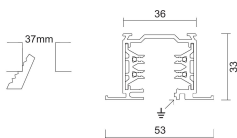
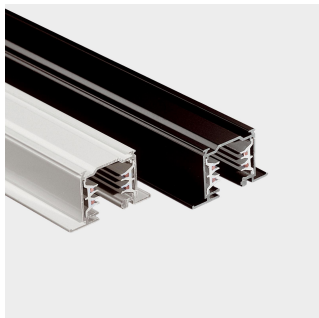


DKM single-phase dimmable recessed 4mt

Design:



IP 20

Product Code	Color
7521-40-31	White
On demand	Yes

General specifications

Product type	Tracks
Mounting type	Ceiling - recessed
Description	The 1-phase dimmable recessed track operates through a + / - polarized signal to manage a wide range of applications in the field of light planning. The use of the specific electro-mechanic adapter code 7559 is compulsory. It is made of extruded aluminium alloy. The copper wires are located inside extruded profiles in PVC, with high insulating properties.

Electrical specifications

Voltage (V)	230/250
-------------	---------

Weight and dimension

Length (mm)	4000
Height (mm)	33
Width (mm)	53

Accessories

Product Code	7559-00-31
Name	DALI electro/mechanical adapter 6A, mechanical load 10 Kg
Length (mm)	92
Packaging quantity	10
Product Code	7665-10-W31
Name	Right live-end
Length (mm)	88.5
Packaging quantity	2
Product Code	7665-11-W31
Name	Left live-end
Length (mm)	88.5
Packaging quantity	10
Product Code	7666-10-W31
Name	Central connector and straight joint
Length (mm)	120
Packaging quantity	2
Product Code	7604-10-W31
Name	Electrical straight joint
Packaging quantity	10

Power tolerance $\pm 5\%$ - Luminous flux tolerance $\pm 5\%$ - Measurement uncertainty $\pm 10\%$ - Ta: 25°C

Datasheet



Product Code	7654-10-W31
Name	Mechanical straight joint with stop without electrical contacts
Length (mm)	80
Packaging quantity	6



Product Code	7625-00-31
Name	Mechanical adapter
Length (mm)	65
Packaging quantity	10



Product Code	7618-00-31
Name	Mechanical adapter with automatic locking and steel wire 2000 mm
Length (mm)	65
Packaging quantity	10



Product Code	7664-00-48
Name	Suspension for false ceiling
Packaging quantity	5



Product Code	7659-00-W31
Name	Dead end
Packaging quantity	10



Product Code	7609-00-00
Name	Nut for electro/mechanical adapter M10x1
Packaging quantity	10



Product Code	7607-00-00
Name	Ceiling kit
Packaging quantity	10



Product Code	7624-00-30
Name	Track cover mm 1000
Length (mm)	1000
Packaging quantity	10

Power tolerance $\pm 5\%$ - Luminous flux tolerance $\pm 5\%$ - Measurement uncertainty $\pm 10\%$ - Ta: 25°C