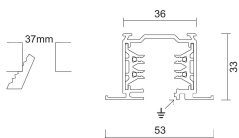
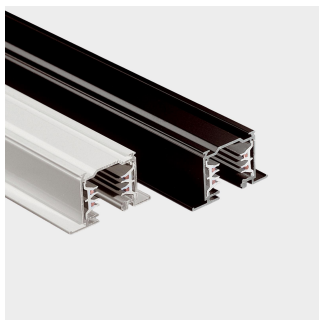
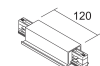
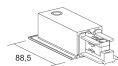
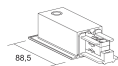


DKM single-phase dimmable recessed 4mt

Design:



IP 20



Product Code	Color
7521-40-30	Black
On demand	Yes

General specifications

Product type	Tracks
Mounting type	Ceiling - recessed
Description	The 1-phase dimmable recessed track operates through a + / - polarized signal to manage a wide range of applications in the field of light planning. The use of the specific electro-mechanic adapter code 7559 is compulsory. It is made of extruded aluminium alloy. The copper wires are located inside extruded profiles in PVC, with high insulating properties.

Electrical specifications

Voltage (V)	230/250
-------------	---------

Weight and dimension

Length (mm)	4000
Height (mm)	33
Width (mm)	53

Accessories

Product Code	7559-00-30
Name	DALI electro/mechanical adapter 6A, mechanical load 10 Kg
Length (mm)	92
Packaging quantity	10
Product Code	7665-10-W30
Name	Right live-end
Length (mm)	88,5
Packaging quantity	10
Product Code	7665-11-30
Name	Left live-end
Length (mm)	88,5
Packaging quantity	10
Product Code	7666-10-W30
Name	Central connector and straight joint
Length (mm)	120
Packaging quantity	2
Product Code	7604-10-W30
Name	Electrical straight joint
Packaging quantity	10

Power tolerance $\pm 5\%$ - Luminous flux tolerance $\pm 5\%$ - Measurement uncertainty $\pm 10\%$ - Ta: 25°C

Datasheet



Product Code 7654-10-W30
Name Mechanical straight joint with stop without electrical contacts
Packaging quantity 6



Product Code 7625-00-30
Name Mechanical adapter
Length (mm) 65
Packaging quantity 10



Product Code 7618-00-30
Name Mechanical adapter with automatic locking and steel wire 2000 mm
Length (mm) 65
Packaging quantity 10



Product Code 7664-00-48
Name Suspension for false ceiling
Packaging quantity 5



Product Code 7659I-00-W30
Name Dead end
Packaging quantity 10



Product Code 7609-00-00
Name Nut for electro/mechanical adapter M10x1
Packaging quantity 10



Product Code 7607-00-00
Name Ceiling kit
Packaging quantity 10



Product Code 7624-00-30
Name Track cover mm 1000
Length (mm) 1000
Packaging quantity 10

Power tolerance $\pm 5\%$ - Luminous flux tolerance $\pm 5\%$ - Measurement uncertainty $\pm 10\%$ - Ta: 25°C