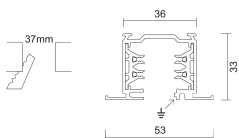
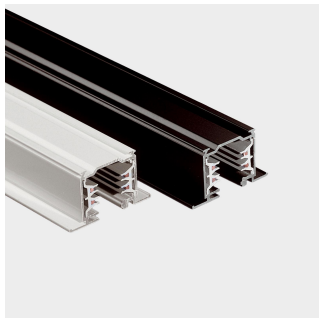


## DKM single-phase dimmable recessed 2mt

Design: Studio Tecnico Ivela



IP 20

Product Code	Color
7521-20-30	Black
On demand	Yes

### General specifications

Product type	Tracks
Mounting type	Ceiling - recessed
Description	The 1-phase dimmable recessed track operates through a + / - polarized signal to manage a wide range of applications in the field of light planning. The use of the specific electro-mechanic adapter code 7559 is compulsory. It is made of extruded aluminium alloy. The copper wires are located inside extruded profiles in PVC, with high insulating properties.

### Physical specifications

Body	Extruded aluminium
Thermal dissipation	Passive

### Electrical specifications

Voltage (V)	230/250
-------------	---------

### Weight and dimension

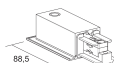
Length (mm)	2000
Height (mm)	33
Width (mm)	53

### Accessories

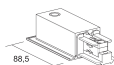
Product Code	7559-00-30
Name	DALI electro/mechanical adapter 6A, mechanical load 10 Kg
Length (mm)	92
Packaging quantity	10



Product Code	7665-10-W30
Name	Right live-end
Length (mm)	88.5
Packaging quantity	10



Product Code	7665-11-30
Name	Left live-end
Length (mm)	88.5
Packaging quantity	10



Product Code	7666-10-W30
Name	Central connector and straight joint
Length (mm)	120
Packaging quantity	2



Product Code	7604-10-W30
Name	Electrical straight joint
Packaging quantity	10



Power tolerance  $\pm 5\%$  - Luminous flux tolerance  $\pm 5\%$  - Measurement uncertainty  $\pm 10\%$  - Ta: 25°C

# Datasheet



Product Code 7654-10-W30  
Name Mechanical straight joint with stop without electrical contacts  
Packaging quantity 6



Product Code 7625-00-30  
Name Mechanical adapter  
Length (mm) 65  
Packaging quantity 10



Product Code 7618-00-30  
Name Mechanical adapter with automatic locking and steel wire 2000 mm  
Length (mm) 65  
Packaging quantity 10



Product Code 7664-00-48  
Name Suspension for false ceiling  
Packaging quantity 5



Product Code 7659I-00-W30  
Name Dead end  
Packaging quantity 10



Product Code 7609-00-00  
Name Nut for electro/mechanical adapter M10x1  
Packaging quantity 10



Product Code 7607-00-00  
Name Ceiling kit  
Packaging quantity 10



Product Code 7624-00-30  
Name Track cover mm 1000  
Length (mm) 1000  
Packaging quantity 10

Power tolerance  $\pm 5\%$  - Luminous flux tolerance  $\pm 5\%$  - Measurement uncertainty  $\pm 10\%$  - Ta: 25°C