


KIT PROFILI / PROFILES KIT

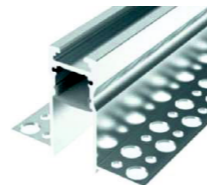
PROFILO 6137

INFORMAZIONI PRODOTTO:
PRODUCT INFORMATIONS:

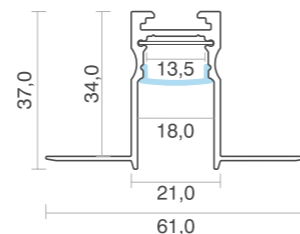
Materiale profilo: <i>Material:</i>	Alluminio / Aluminium
Finitura: <i>Finish:</i>	 Alluminio anodizzato Anodized aluminum
Materiale diffusore: <i>Diffuser material:</i>	Policarbonato / Polycarbonate
Diffusore: <i>Diffuser:</i>	Opale Opal
Contenuto kit: <i>Kit contents:</i>	Profilo+Diffusore+Tappi (1chiuso e 1 aperto) Profile+Diffuser+Caps (1 closed and 1 open)
Ambiente: <i>Ambient:</i>	Interno / Indoor
Emissione luce: <i>Light emission:</i>	Monoemissione / Single emission
Lunghezze disponibili: <i>Available lengths:</i>	1m - 2m
Grado IP: <i>IP grade:</i>	IP20

Incasso a raso
Flush recessed

Luce recessa
Deeply recessed




Unità: mm
Unit: mm



INSTALLAZIONE / INSTALLATION

FASE 01

Praticare una fresatura larga 22mm sul cartongesso.
Drill a 22mm wide milling on the plasterboard.

 Non inclusi
Not included

FASE 02

Fissare il profilo al cartongesso tramite le apposite viti.
Attach the profile to the plasterboard through the special screws.

FASE 03

Stuccare la superficie del cartongesso portandola a raso e verniciare.
Grouting the surface of the plasterboard bringing it to satin and paint.

COMPOSIZIONE CODICE KIT
KIT CODE COMPOSITION

COD.BASE BASE CODE:	DIFFUSORE DIFFUSER	FINITURA FINISH	LUNGHEZZA LENGTH
6137-	0 (opale/opal)	00 (alluminio/aluminium)	L10 (1000mm) L20 (2000mm)

OPZIONALE / OPTIONAL

CODICI COMPONENTI SINGOLI / SINGLE COMPONENTS CODES

PROFILO 6137

PROFILO/PROFILE

14807-L10 / 14807-L20
Alluminio L=1m/2m
Aluminum L=1m/2m

DIFFUSORE/DIFFUSER

14804-L10 / 14804-L20
Opale L=1m/2m
Opal L=1m/2m

TAPPI/CAPS

14811 / 14810
Alluminio: passacavo e chiuso
Aluminum: grommet and closed