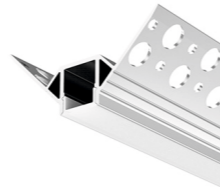


KIT PROFILI / PROFILES KIT

Incasso a raso
Flush recessed

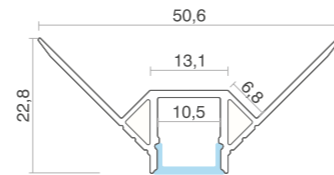


PROFILO 2351

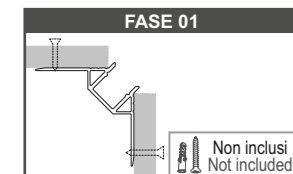
INFORMAZIONI PRODOTTO:
PRODUCT INFORMATION:

Materiale profilo: <i>Material:</i>	Alluminio / Aluminium
Finitura: <i>Finish:</i>	Alluminio anodizzato Anodized aluminum
Materiale diffusore: <i>Diffuser material:</i>	Policarbonato / Polycarbonate
Diffusore: <i>Diffuser:</i>	Opale Opal
Contenuto kit: <i>Kit contents:</i>	Profilo+Diffusore+Tappi (1chiuso e 1 aperto) Profile+Diffuser+Caps (1 closed and 1 open)
Ambiente: <i>Ambient:</i>	Interno / Indoor
Emissione luce: <i>Light emission:</i>	Monoemissione / Single emission
Lunghezze disponibili: <i>Available lengths:</i>	1m - 2m
Grado IP: <i>IP grade:</i>	IP20

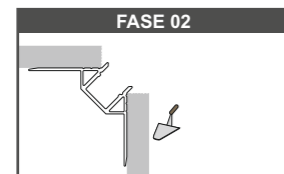
Unità: mm
Unit: mm



INSTALLAZIONE / INSTALLATION



Fissare il profilo al cartongesso tramite le apposite viti.
Attach the profile to the plasterboard through the special screws.



Stuccare la superficie del cartongesso portandola a raso e verniciare.
Grouting the surface of the plasterboard bringing it to satin and paint.

COMPOSIZIONE CODICE KIT
KIT CODE COMPOSITION

COD.BASE BASE CODE:	DIFFUSORE DIFFUSER	FINITURA FINISH	LUNGHEZZA LENGTH
2351-	0 (opale/opal)	00 (alluminio/aluminium)	L10 (1000mm) L20 (2000mm)

OPZIONALE / OPTIONAL

CODICI COMPONENTI SINGOLI / SINGLE COMPONENTS CODES

PROFILO 2351

PROFILO/PROFILE

14626-L10 / 14626-L20
Alluminio L=1m/2m
Aluminum L=1m/2m

DIFFUSORE/DIFFUSER

14633-L10 / 14633-L20
Opale L=1m/2m
Opal L=1m/2m

TAPPI/CAPS

14631 / 14632
Alluminio: passacavo e chiuso
Aluminum: grommet and closed