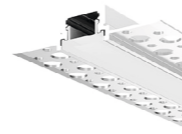


KIT PROFILI / PROFILES KIT

Incasso a raso
Flush recessed

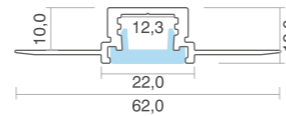


PROFILO 6212

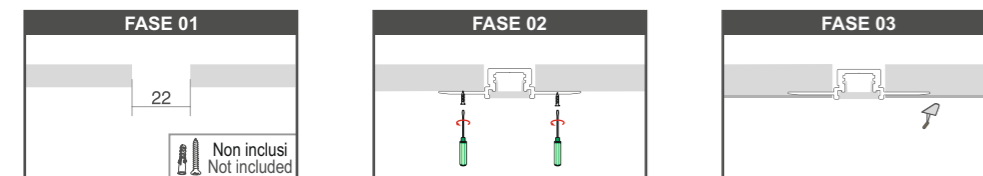
INFORMAZIONI PRODOTTO:
PRODUCT INFORMATION:

Materiale profilo: <i>Material:</i>	Alluminio / Aluminium
Finitura: <i>Finish:</i>	Alluminio anodizzato Anodized aluminum
Materiale diffusore: <i>Diffuser material:</i>	Policarbonato / Polycarbonate
Diffusore: <i>Diffuser:</i>	Opale Opal
Contenuto kit: <i>Kit contents:</i>	Profilo+Diffusore+Tappi (1chiuso e 1 aperto) Profile+Diffuser+Caps (1 closed and 1 open)
Ambiente: <i>Ambient:</i>	Interno / Indoor
Emissione luce: <i>Light emission:</i>	Monoemissione / Single emission
Lunghezze disponibili: <i>Available lengths:</i>	1m - 2m
Grado IP: <i>IP grade:</i>	IP20

Unità: mm
Unit: mm



INSTALLAZIONE / INSTALLATION



Praticare una fresatura larga 22mm sul cartongesso.
Drill a 22mm wide milling on the plasterboard.

Fissare il profilo al cartongesso tramite le apposite viti.
Attach the profile to the plasterboard through the special screws.

Stuccare la superficie del cartongesso portandola a raso e verniciare.
Grouting the surface of the plasterboard bringing it to satin and paint.

COMPOSIZIONE CODICE KIT
KIT CODE COMPOSITION

COD.BASE BASE CODE:	DIFFUSORE	FINITURA	LUNGHEZZA
6212-	0 (opale/opal)	00 (alluminio/aluminium)	L10 (1000mm) L20 (2000mm)

OPZIONALE / OPTIONAL

CODICI COMPONENTI SINGOLI / SINGLE COMPONENTS CODES

PROFILO 6212

PROFILO/PROFILE

14726-L10 / 14726-L20
Alluminio L=1m/2m
Aluminum L=1m/2m

DIFFUSORE/DIFFUSER

14737-L10 / 14737-L20
Opale L=1m/2m
Opal L=1m/2m

TAPPI/CAPS

14735 / 14736
Alluminio: passacavo e chiuso
Aluminum: grommet and closed